



NORDSTJERNEN

PASSENGER SHIP



M/S Nordstjernen was built in 1956 by the Blohm & Voss Shipyard in Hamburg (Germany) and entered the Hurtigruten service the same year.

In 1968, the Nordstjernen started a new Svalbard Express service to Spitzbergen and was operating there until 2009, with small break in 1982-1983, when the vessel received a major upgrade to make her fit for further service, at the Bergen shipyard of Mjellem & Karlsen (Norway).

In November 2012 the vessel was delivered to new owners and same year received the highest protect protection by the Norwegian Maritime Heritage (Fredet).

SHIP PARTICULARS

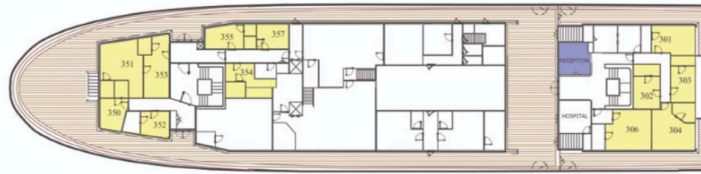
General	
IMO	5255777
Call Sign	LATU3
Flag	NORWAY
Homeport	BERGEN
Year Built	1956
Type	PASSENGER SHIP
Class Society	DNV
Ice Class	Ice C
Main Dimensions	
Length	80,78 m
Breadth	12,60 m
Draft	4,49 m
Tonnage	
Gross Tons	2191
Nett Tons	1233
Capacities	
Fuel Capacity (m3)	115
Water Capacity (m3)	104
Range, Speed and Endurance	
Speed Cruise (kt)	15
Accommodation	
Crew Cabins	33
Passengers Cabins	43 x ensuites 28 x shared facilities
Total Capacity	200 POB (150 PAX)
Machinery	
Generator Engine	MAK 8M453, 2650 kW
Propulsion Engine	2 x Volvo Penta 350 kW 1 x Detroit 175 kW



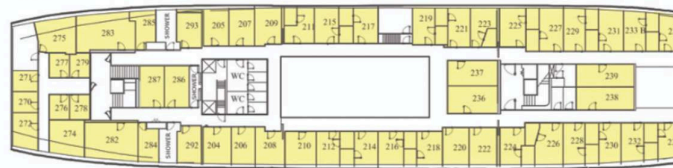
SALON DECK



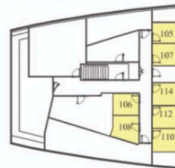
DECK C



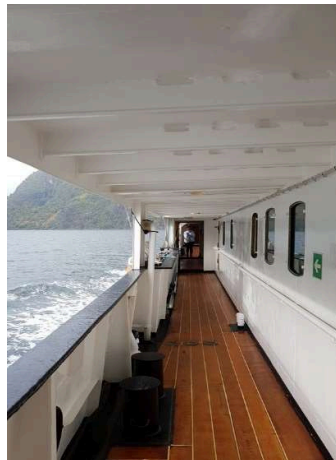
DECK B



DECK A



- Lugar/Cabin/Kabine
- Fellesareal/Public area/Lounges
- Resepsjon/Reception/Rezeption
- Uteområde/Outdoor area/Außendeck
- Restaurant
Café
Bar



M/S Nordstjernen

