



VESTLAND EXPLORER

EXPEDITION VESSEL

M/S Vestland Explorer was built at Nordsøværftet A/S in Ringkøbing (Denmark), 1994. The ship was built as Buoy Handling Vessel and Seabed operation for the Danish Maritime Authority.

Since 1994 till 2019 the vessel has been employed in Denmark and as well Greenland, among keeping maintenance of seabuoys, lighthouse etc. Due to less demands for such service the ship was sold in 2019.

In 2021 the vessel has been converted in Gdansk (Poland) into and Expedition vessel and start cruising in February 2022.

The ship operates in Norway including Svalbard, and as well Greenland.

Ship Particulars

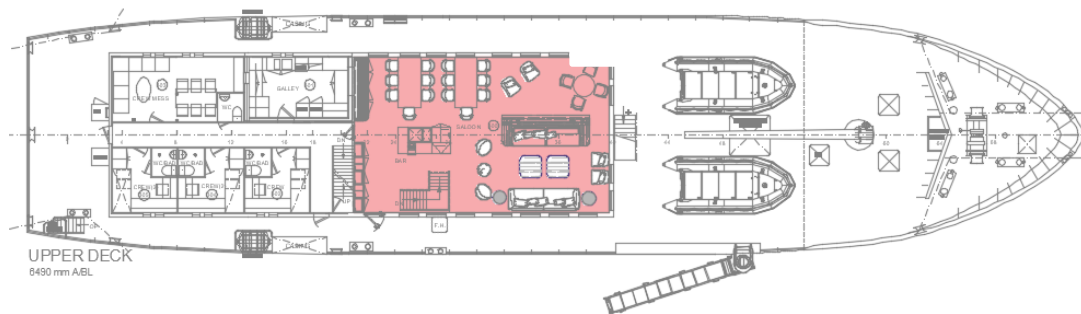
General	
IMO	9080950
Call Sign	LAJZ8
Flag	NORWAY (NIS)
Homeport	SKUDENESHAVN
Year Built	1994
Type	GENERAL DRY CARGO SHIP
Class Society	RINA
Ice Class	1B (Hull Ice 1A)
Main Dimensions	
Length	46,45 m
Breadth	10,5 m
Draft	2,9 m
Tonnage	
Gross Tons	827
Nett Tons	248
Capacities	
Fuel Capacity (m3)	89,9
Water Capacity (m3)	37,4
Range, Speed and Endurance	
Speed Cruise (kt)	Max 12; service 8 - 10
Accommodation	
Crew Cabins	8
Passengers Cabins	2 x Deluxe suites
	2 x Superior double
	3 x Standard double
	2 x Single
TOTAL CAPACITY	25 POB (12 PAX)
Machinery	
Generator Engine	4 x CUMMINS, 1612 kW
Propulsion Engine	2 x Electric, 749 kW



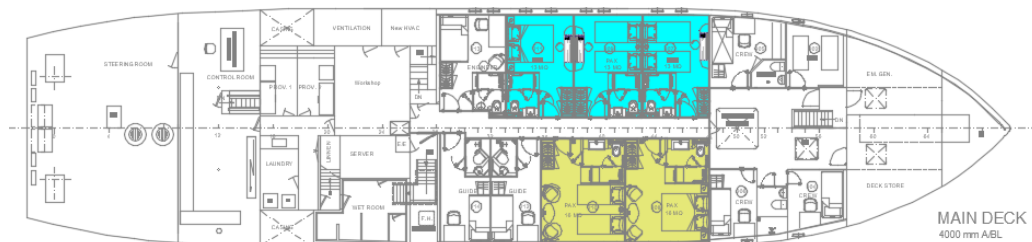
M/S Vestland Explorer Cabin Plan



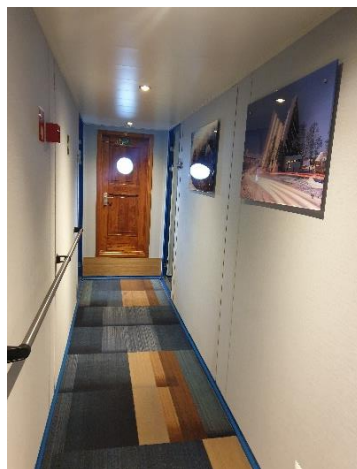
BOAT DECK
8980 mm ABL



UPPER DECK
6490 mm ABL



MAIN DECK
4000 mm ABL



M/S VESTLAND EXPLORER



Vestland Classic AS
Veia Sjoarveg 57, 4276 Veavågen, Norway
vestlandclassic.com

